

ONVIF

Full Function Camera

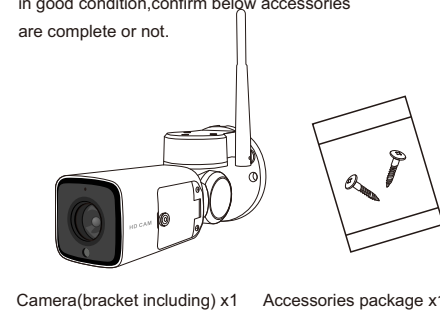


Features:

- HD** HD image sensor network camera
- WiFi** Support WIFI connection
- PTZ** Support Pan Tilt ZOOM
- IP66** Outdoor Waterproof
- Audio** Support two way audio
- Motion** Motion detection Alert, mobile phone can receive msg once object moving
- Day/Night** HD video and image no matter Day/Night

A. Packaging Details

After opening the package, please make sure the camera is in good condition, confirm below accessories are complete or not.

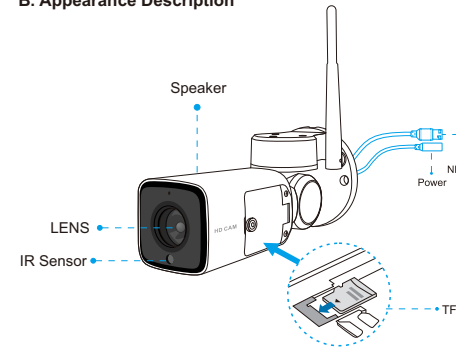


1



Quick start guide x1

B. Appearance Description



Description

- LED light** Yellow and blue: flashing alternately, camera is waiting for Wifi configuration.
Blue: always on, Wifi configuration succeed.
Yellow: always on, camera is starting; flashing, camera start completely.
- RESET** Press on 5 seconds, camera restore to factory default setting.

2

SD Card Support micro SD card local storage (Max support 128G), after insert SD card please login mobile APP to format it.

Power adapter 12V-1A.

Speaker Support two way audio and voice prompt.

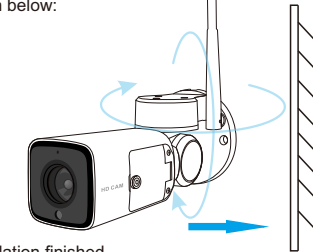
C. Installation

1. Install the camera base

Fix the base on the wall with screw firstly.

2. Install the camera

Fix the camera's bracket on camera's base by screw as shown below:

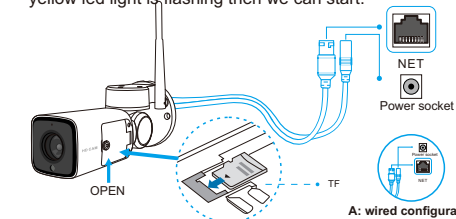


3. Installation finished

You can adjust the camera viewing angle freely

D. Quick use

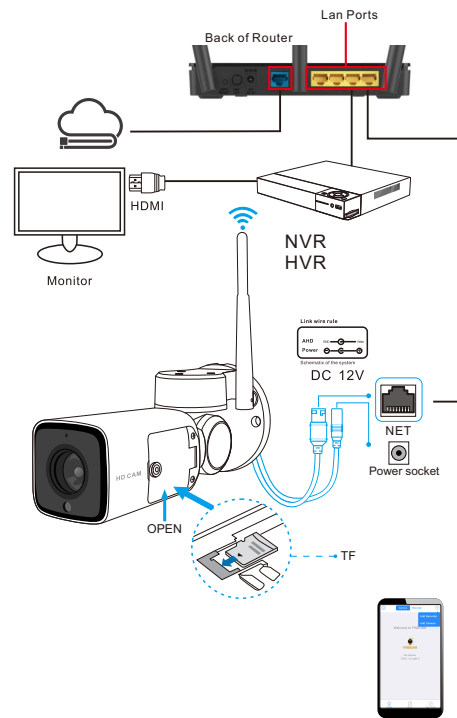
Power-on the camera, while it is self-checking, camera yellow led light is flashing then we can start.



3

1 NVR Connection

Schematic of the system

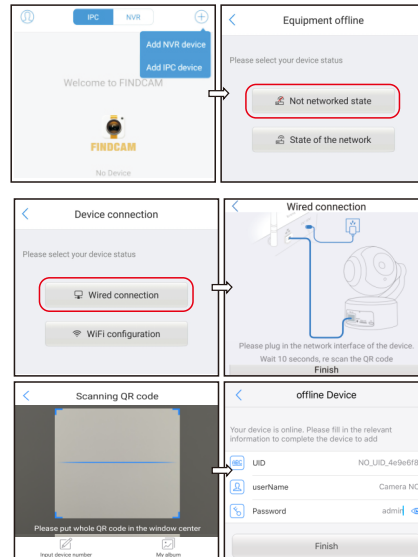


4

2 APP Configuration

a: wired configuration.

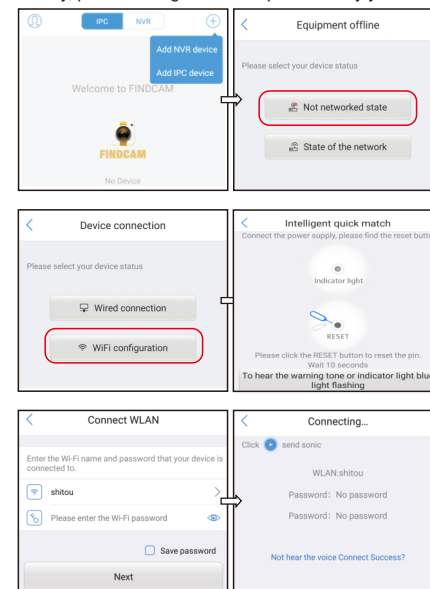
Run the APP FINDCAM,click “+Add IPC device” on right top corner, select the “Not networked state”, Click the “Wired Connection” ,Make sure your phone and the camera in the same LAN. Scan QR code or input device ID.input the default password:admin.



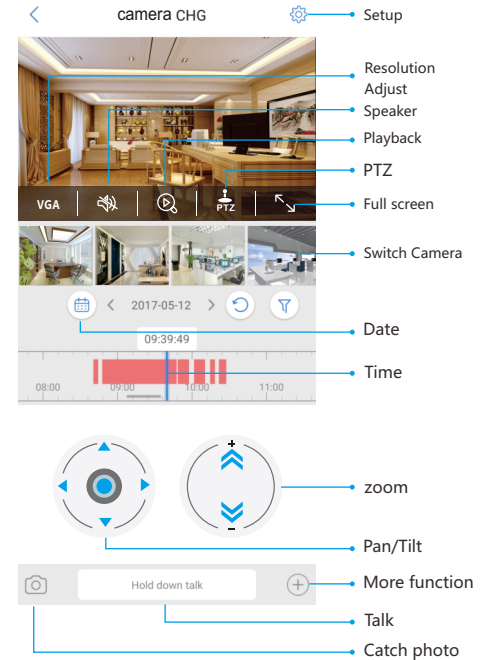
5

b: Wifi configuration.

1).Press reset button for 5 seconds to hear the warning tone then release the button,wait for camera yellow and blue led lights are flashing alternately.
2).Run the APP FINDCAM,click “+ Add IPC device” on top right corner,choose “Not networked state”.firstly set Wifi configuration,select the Wifi which your mobile phone connected,enter password, after connecting successfully, can find the camera, camera blue led light is ways on.when you first time login the camera,considering personal privacy security, please change the initial password by yourself.



6



7