

Network Camera Fast Manual

1 Product Overview



CUT,realising day & night non-stop monitoring.

◆Confirm to GB/T28181-2011

◆support HVR/NVR connection, conform to ONVIF2.4

◆Conform to IP66 water-proof design,very reliable

◆web and IMS300 supporting、central management software Vssmobile、◆Support Cloud Monitoring

For more information, please read the instructions in the CD.

2 Interface Instructions

2.1 Small conch Web camera Instructions,as follows:

2.2 Interface instructures:

12V DC: 12V DC input, Wrong power can cause permanent damage to the camera.

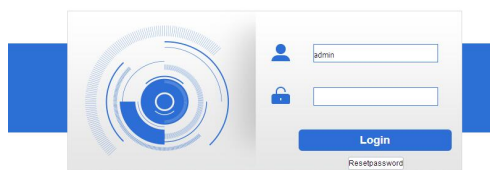
3 Network Operations

3.1 Charge the device, the power and adapter should be in accordance with the requirements. Power for about 1 minute until the device starts normally, use a network cable to connect the device to the switch / router / hub. (as follows)

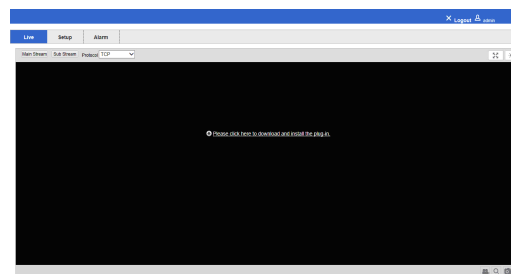
3.2 Set IP address in the Lan ,Default IP address is 192.168.1.10; To make sure the computer work with the device ,you need to

set the computer IP as 192.168.1.X

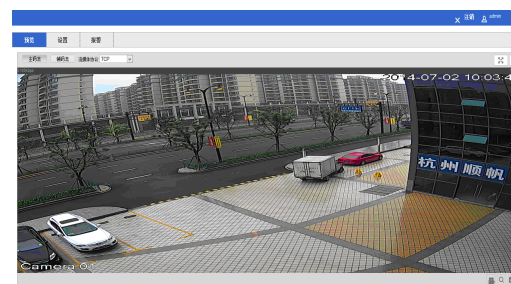
3.3 Open Firefox,type IP address, Login C Factory default IP setting: IP address: 192.168.1.10; Subnet Mask: 255.255.255.0; Gateway: 192.168.1.1; User name: admin; password 123456) .As follows:



3.3 Following interface will pop up a link “Please download the plug-in by clicking here” when you log in. Please click it and install the plug-in then restart your browser to log in Open IE,type IP address, Login

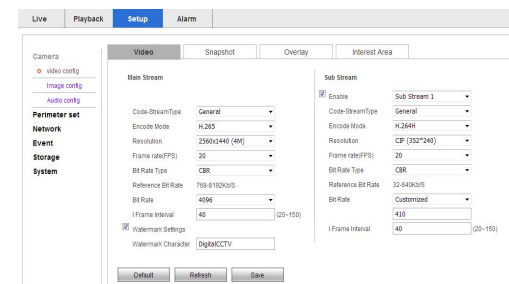


3.4 After installing the plug-in, Browsing the interface

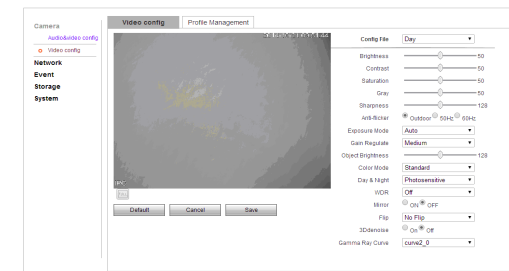


4 Camera setting

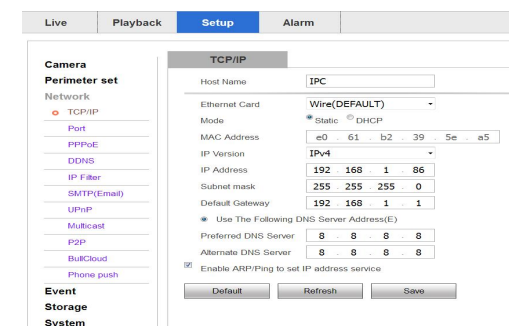
4.1 Audio &video configuration



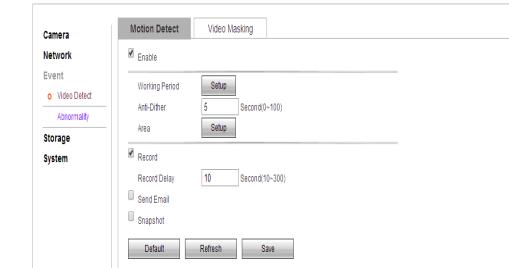
4.2 Image configuration



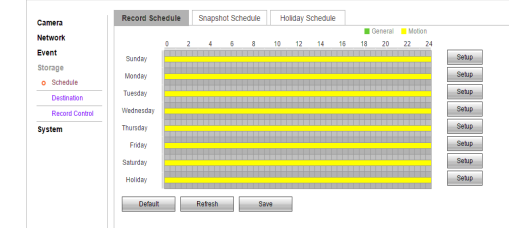
4.3 Network Settings



4.4 Event management



4.5 Storage management



4.6 Configuring Local Settings.

Live | Playback | Setup | Alarm

Camera

Perimeter set

Network

Event

Storage

System

General

Account

Default

Import/Export

Auto Maintain

Upgrade

Log

Version

Online User

General

local config

Date&Time

Device Name

03115807_161090

Language

English

Video Standard

NTSC

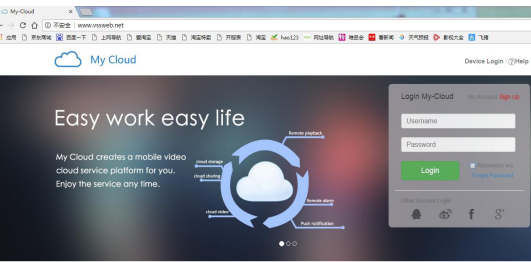
Default

Refresh

Save

5 Cloud service website login

www.vssweb.net



6 PC software IMS300

Username is admin, password is 123456

IMS300

Intelligent & Security

Username:

admin

Password:

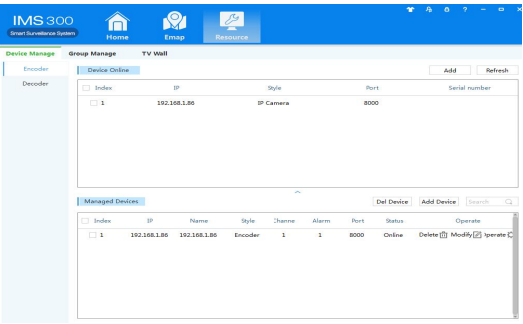
PASSWORD

Save Password

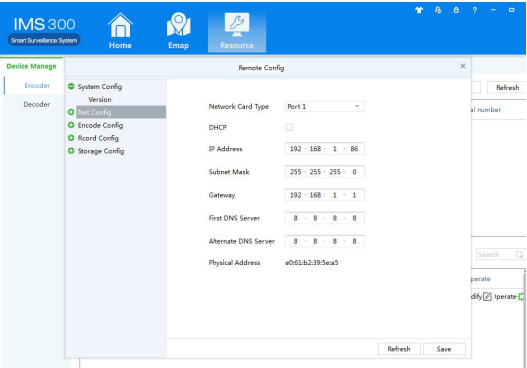
Auto Login

Login

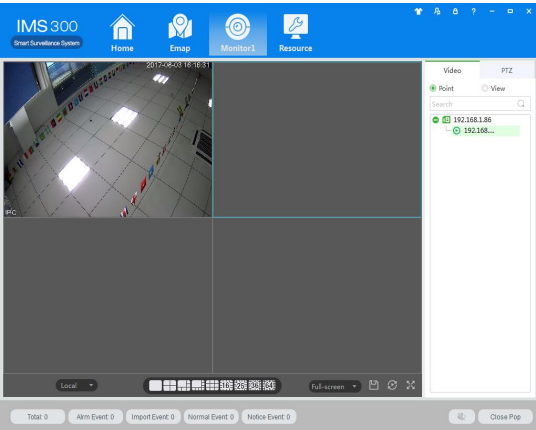
6.1 Search and add the IPC



6.2 Setting the camera parameter



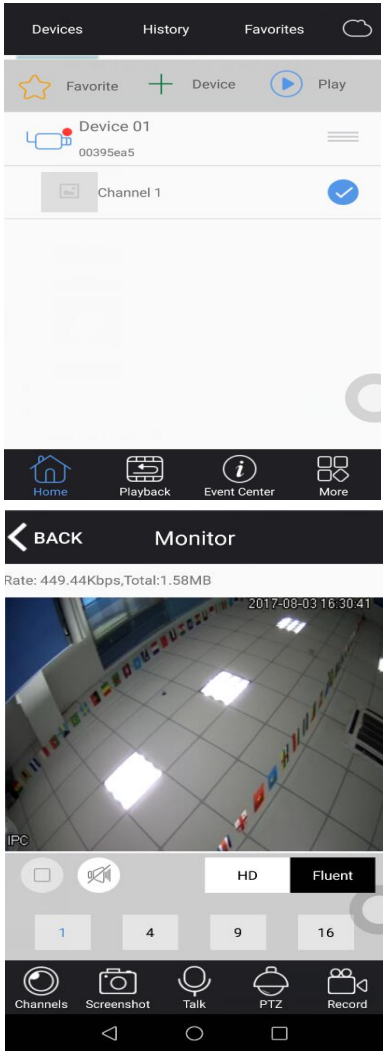
6.3 IPC video play



7 Mobile APP "VSSMOBILE"



Camera video on mobile app



Product Warranty Card

Purchase Date	Model
Product name	Dealer
Purchase Market	
Customer name	Profes sion
Telephone number	Zip code
Work units	
Current Address	

Warranty:
Warranty period: 2 year. The Warranty Card only applies for the products you bought from us.
Please take care of it to get more efficient and better service.