

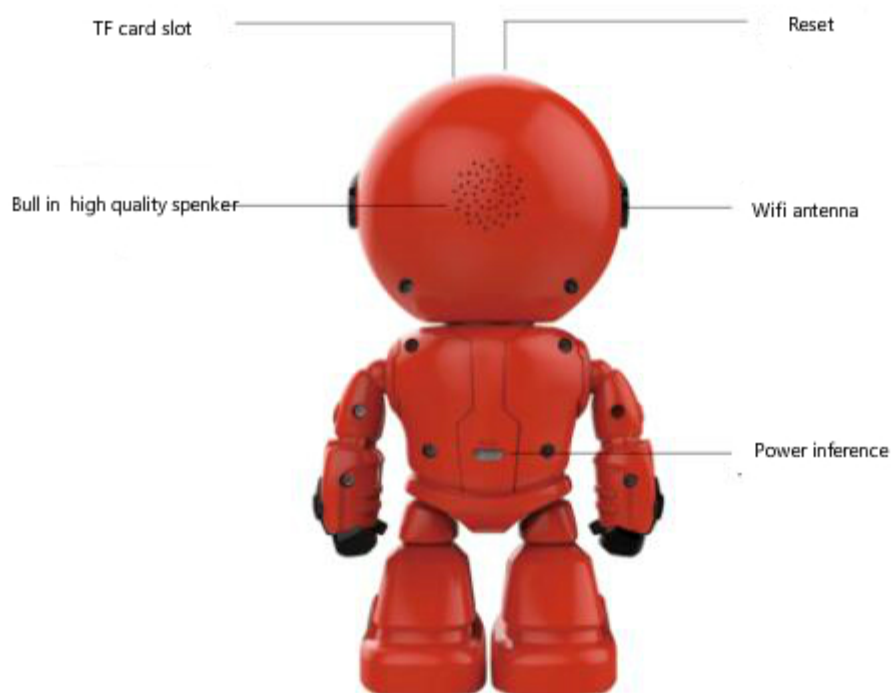
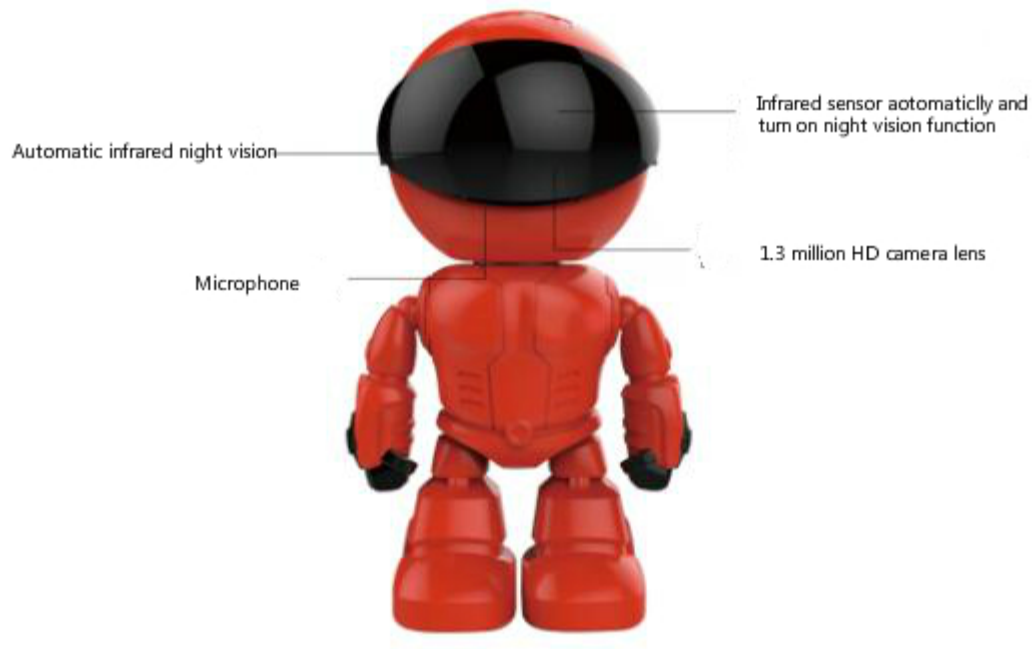
Instructions

ASTROBOY



Dear customer, welcome to use this product, before using this product, please read the operation instructions in detail, and save this manual for future reference.

I、Realize your HD card type IPC.



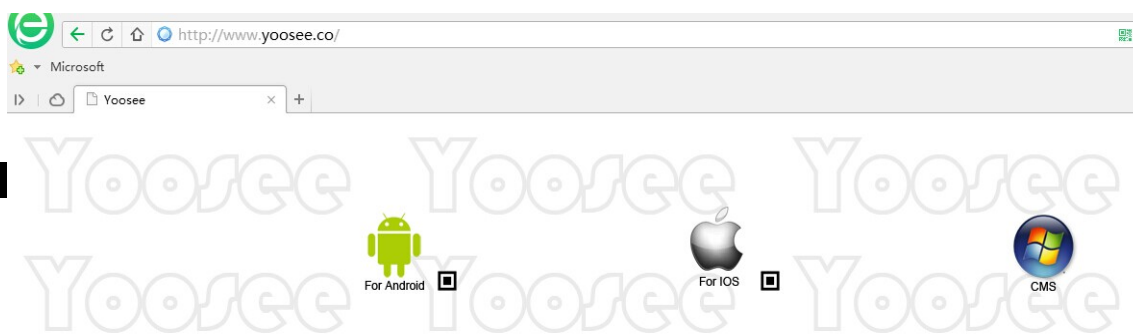
II、Mobile phone software operation

For better experience the convenience that brought by this product , please download mobile phone software before using this product:

1、Mobile phone software download:

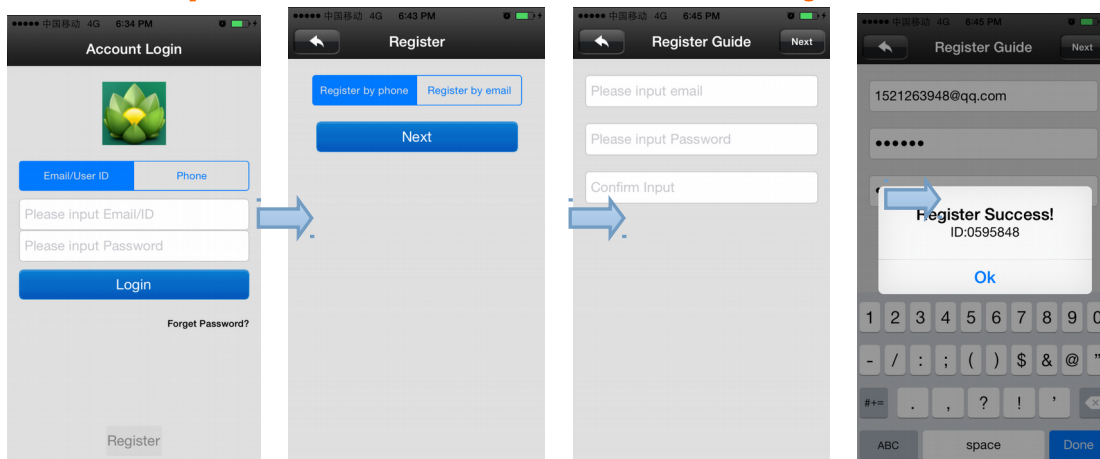
- 1) IOS user can download and install Yoosee in Apple official shop
- 2) Android user can enter website :<http://yoosee.co> ,download and install Yoosee
- 3) Also can input <http://yoosee.co/> in the explorer to download it in PC, Android version and IOS version can scan the QR code to download the software

directly, PC click  to download directly.



2、Mobile phone ID register

Note: first open the “Yoosee” software , user need register one ID as the following:



- 、 choose the right under “register” to enter
- 、 choose “mobile phone register” or “email register” , click “next”
- 、 input email box and password,click “next”(the email register no need verification code ,register it directly; the mobile phone register,the verification code will be sent to the phone by message.)
- 、 if register successfully,it will show “congratulations,register successfully”,and the system will distribute one ID to you automatically at the same time.please remember this ID,it can be used as the user name ,click “confirm”,input the

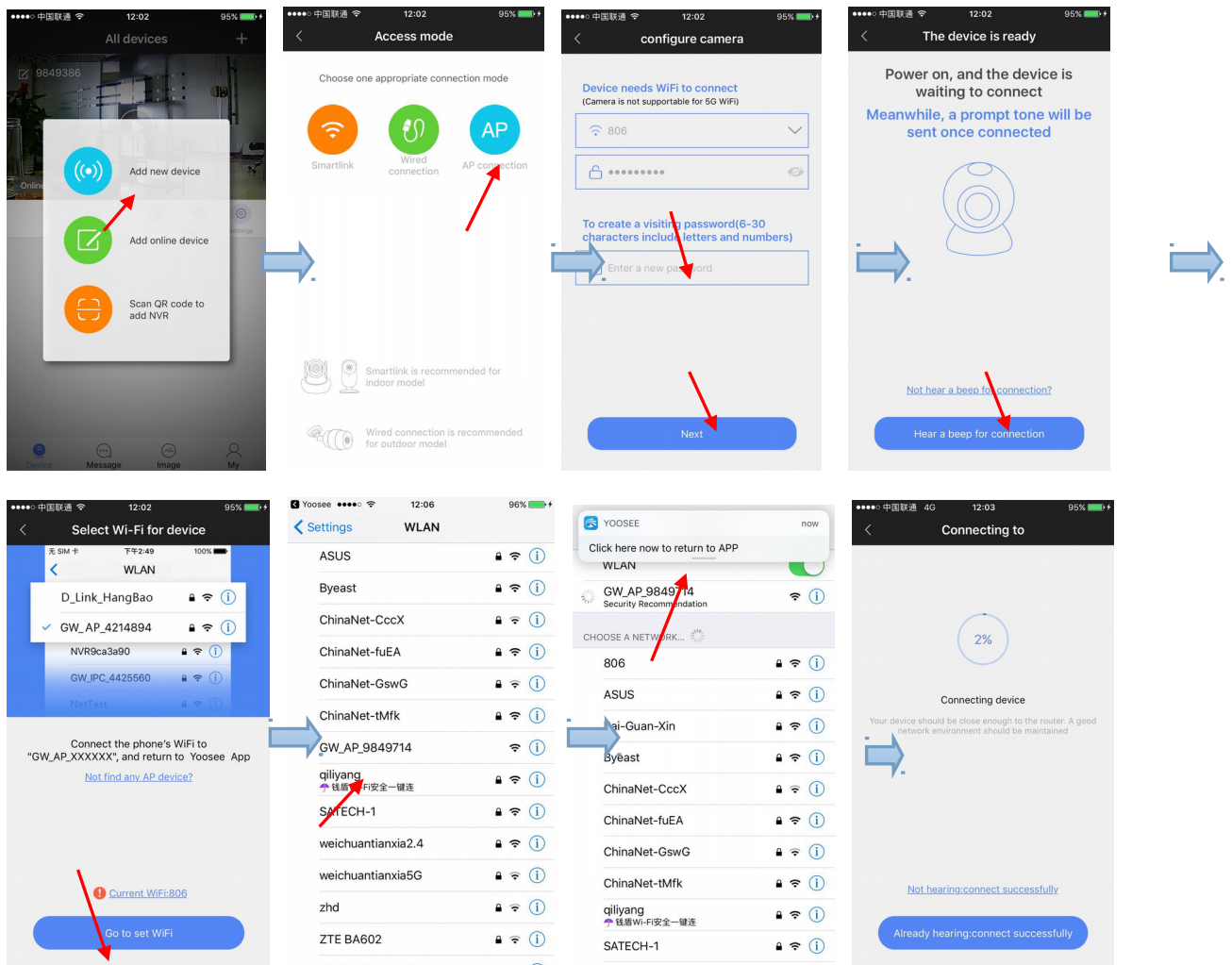
password you set just now again, then you can log in normally.

3、Mobile phone network connection

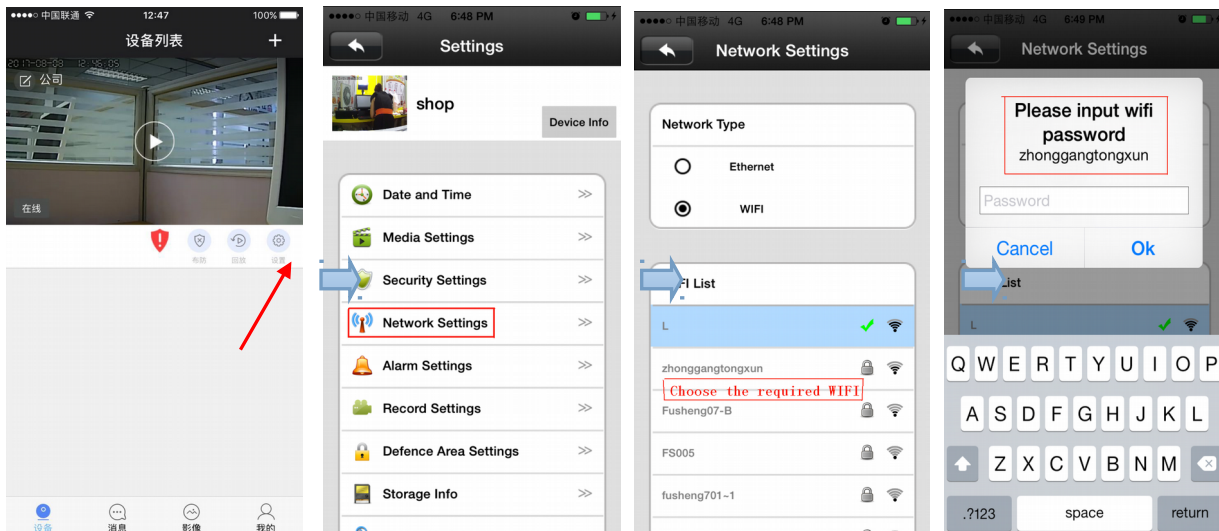
There are three ways for connecting device to network, Before adding a device, reset the machine first.

1) AP connection:

Select AP connection → input the WiFi password asked by device → create visiting password → click “next step” → enter into interface of “adding device” → select your wanted device GW-AP-XXX → follow up with the instructions.



4、input WIFI password, open wifi successfully.



5、 The video settings of mobile phone.

- 1) 、 Video: this device supports 128GB TF card in max ,if need record video,please insert the memory card at first,and then open the Yoosee :click Device ->Device name ->settings->video settings,user can choose record video manually ,alarm video, timing video.
- 2) 、 playback: this device support playback in mobile phone,open the Yoosee software:click Device->Device name->playback, user can find the playback files according to the date, then play it directly .

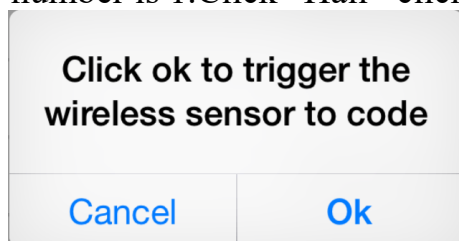
6、 Mobile phone zone settings

- 1) 、 Alarm learning code.

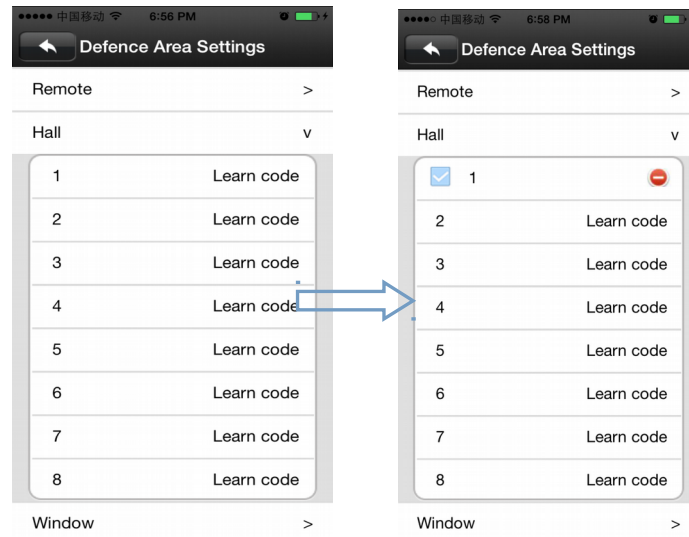
Note: this function is optional,please be sure your device has this function.

The following is the learning code ways:

- A、 Please add device to device list in Yoosee software.
- B、 Click Device->device name->settings->zone settings
- C、 Eg:you want to learn one door sensor that installed in the hall,the serial number is 1.Click “Hall”-click number 1,pop-up:



Click “confirm”, and trigger the alarm you will learn at the same time(take the door sensor as example,separate the door sensor will trigger the alarm).if match code successfully,the words will be turn blue from gray,and will pop-up :learn successfully”.



D、 Back to device list interface ,click the right lock key of the device, “🔒” means Arming, “🔓” means disarming, the alarm will be effective if mach code successfully after arming 15secs.

E、 “remote caontrol” is special designed for alarm remote control ,the ways of matching code is the same as “A、 B、 C” , the function is equal to the right key 🔒 of the device list in the Yoosee software, it can be used as

“arming,disarming”, but it need match with the device learning .

2) 、 **delete match code** : **click the access number that had learned,confirm delete is ok.**

3) 、 **alarm settings:**

Arming : there are two ways :one is through the press the infrared remote control arming key(lock key) that has learned successfully ;two is the arming keys (lock key) in the back of the APP contact list, after arming ,when there is a case, the device will send the alert to the APP actively , and send the scene captured images to the alarm mail at the same time.

Push account,alarm mail:Click on the device name - > settings - > alarm settings: add receiving alert APP ID in binding account (open Yoosee software,can be found after clicking on the first"settings" button from right in the lower, can add up to five account), alarm write the receiving alarm email address.

Motion detecting: alarm as soon as the scene change.

Buzzer: open the buzzer, when have alert the device itself will sirens screaming until "disarming".

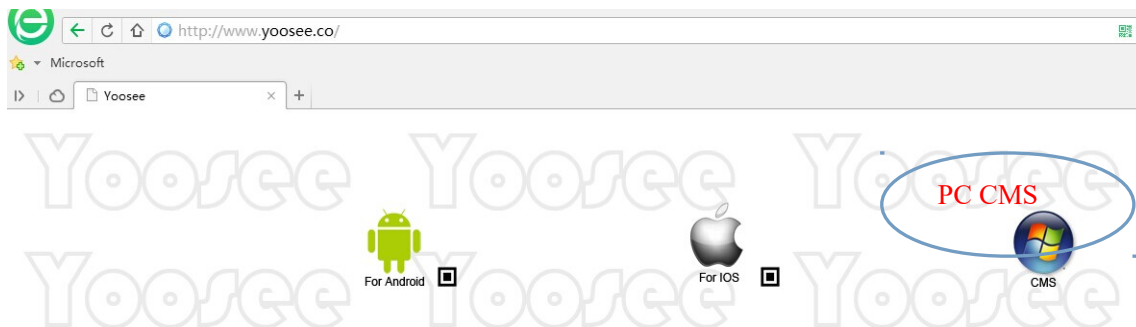
7、 Device upgrading

Click contact names - > Settings - > check device update: click on the new version number,it will remind the new version number if have the new version ,and the user can choose whether to upgrade

III、 The software operation in PC

1, Download software to PC

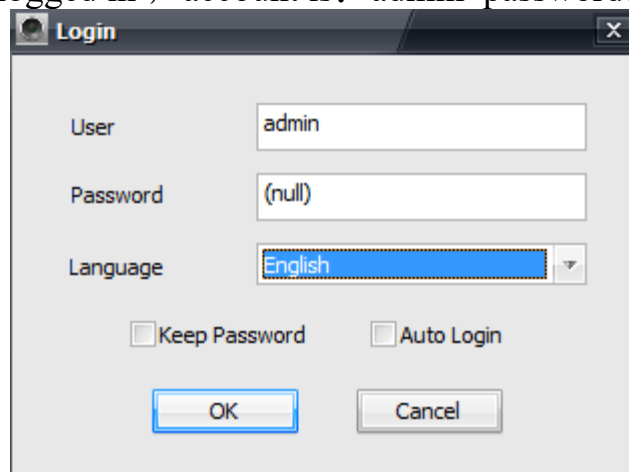
1)、input <http://yoosee.co/> in the PC explorer ,click the icon  to download directly.



图片文字翻译：电脑软件：PC software


2、log account in PC

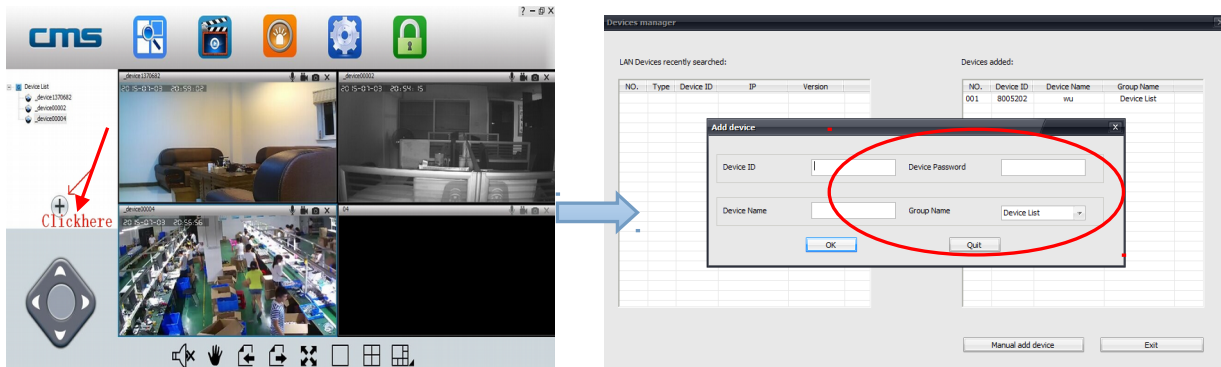
When the computer software is logged in , account is: admin password: null



3、 Computer terminal network connection (the same as mobile phone software operation three ", 3)

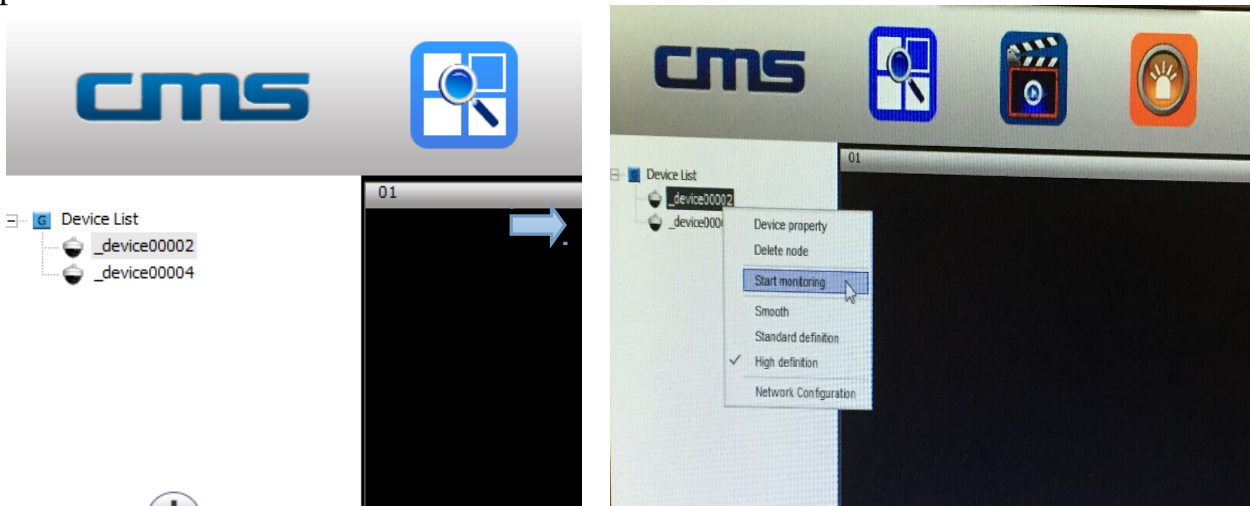
4, Add device to PC.

How to add device to the device list?In fact, there are many kinds of ways to achieve,specific methods, please refer to:1) 、 In the left side of the "CMS" software interface, click the button  , input device name and ID and password and click ok:



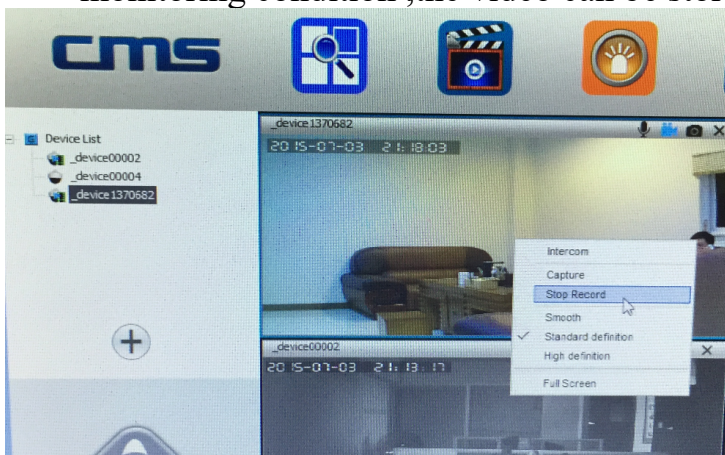
5、Device monitor in PC.

Open CMS software, right click device name -> start monitor, as the following picture:



6、The video setting in PC.

- 1) 、 Video: this device can store the video in the computer's hard disk, right click on the monitor screen ,select "start video" (note: be sure only in the computer monitoring condition ,the video can be stored in the computer's hard disk)



- 2) 、 playback: this device can playback the video from computer, open the CMS

software, click on the replay button  , choose "playback" , user can find

the playback files according to the date, then play it directly .

(note: the video in computer hard disk only can be played in PC ,does not support playing in mobile)

