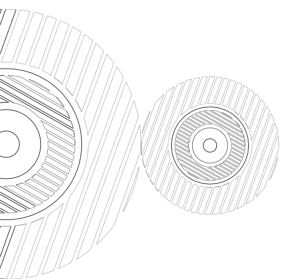


Network Video Recorder

User Manual

V 19.1



User information

Before using the camera, please read the user manual carefully, and obey to the rules when you use, thank you for purchasing the product.

⚠ Cautions:

- Please modify the user password when use this product, so as not to be stolen criminals.
- Please do not install it in the place where is wet, dusty and easy to be touched for child.
- Please install it in the draughty place, be sure not to block the air vents of camera.
- Please use and reserve it in the allowed temperature range, be sure not to dismantle it.
- The product is only suitable for safe use in non-tropical climates.

⚠ Special announcement:

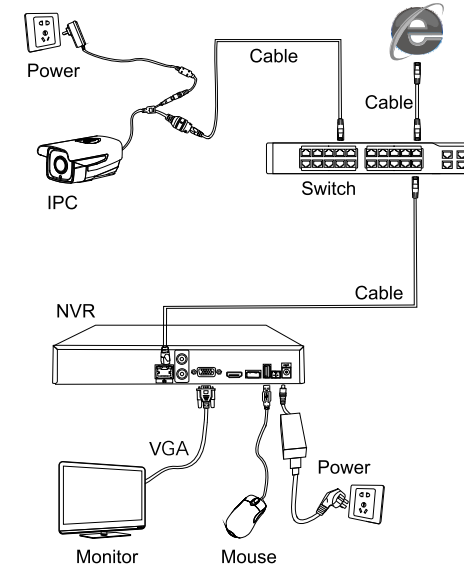
- Instruction is for reference only, product please in kind prevail.
- Instruction content is according to the real-time product, we will not inform in the future.
- Instruction may include something not be inaccurate in technology or consistent with the function of product or wrong printing, please according to the explanation of our company.

2 Back Panel Interface Instruction

Icon	Name
	DC Power Input
	AC Power Input
	Power Switch
	VGA Output
	HDMI Output
	Internet Interface
	USB Interface
A-IN	Audio Frequency Input
A-out	Audio Frequency Output
Alarm-in	Alarm-in
Alarm-out	Alarm-out
RS485	485 Interface
RS232	232 Interface
	BNC Output

Key instruction may provide more than itself, it means that the product doesn't possess all of them, product please in kind prevail.

4 Connection Diagram



Note: Turn on the power after all lines are connected.

Warranty Card

Warranty instruction:

- In warranty period, if there is any breakdown which caused by the product own defect, please connect with dealers or after-sale server of our company.
- Be sure not to use surface mail or cash on delivery to send back the product.
- Free maintain will not be given under the following circumstance:
 - Without valid warranty certificate or purchasing invoice or receipt.
 - The breakdown and damage caused by personal reasons, wrong usage and force majeure.
 - The breakdown and damage caused by maintenance, refit and dismantle movement of a non-our-company authorized maintainer.
 - Exceed the warranty period of our company's prescription.

Warranty period: one year

Your Name: _____ Your TEL: _____

Address: _____

Dealer: _____ Contact person: _____

TEL: _____ Purchase time: _____

Please take care of the warranty card and get more efficient and better service, thank you for purchasing our product!

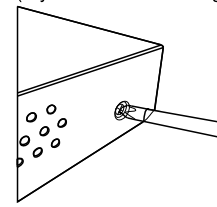
1 Front Panel key Instruction

Icon	Name	Icon	Name
	Play/Pause	Indicator light	Power indicator light
	Play the last file		Link indicator light
	Play the next file		Record indicator light
	Playback/Pause		Shift indicator light
	Stop playback		Alarm indicator light
Search	Video search	ESC	Cancel
Alarm	Alarm-out	Mode	Picture drift
Zoom-	Zoom decrease	REC	Video control
Zoom+	Zoom increase	PTZ	Cloud control
Preset	Preset	Menu	Main menu
	USB interface	Shift	Shift
	Direction	FN	Assistant
OK	OK		Shuttle

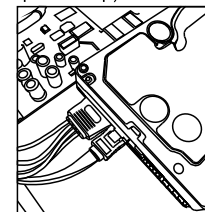
Key instruction may provide more than itself, it means that the product doesn't possess all of them, product please in kind prevail.

3 Hard Disk Installation

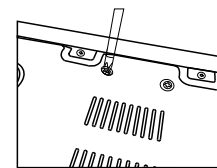
(If you needn't to storage, please skip this step)



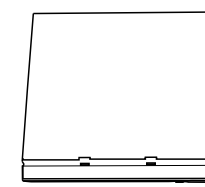
1.Remove side and tail board screws and take off cover board



2.Turn on power, data line and embed hard disk



3.Using screws to fasten the hard disk and chassis baseplate



4.Aim at card slot, close the cover board and tighten the screws

Professional monitoring hard disk is recommended.

5 Power on Operation

Turn on power:

Turn on power and wait the system start. (Some types has power switch, please close it.)

Initialization settings:

- ① Please follow the system interface reminder, click **[Next]**, then enter the system login interface.



Default **[user]** :admin **[password]** :none, click **[OK]**

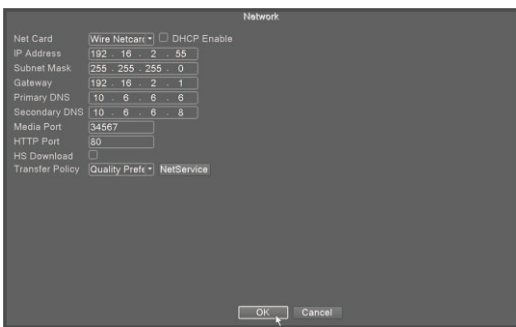
② Click **【Next】** , set the system time and system language.

③ Click **【Next】** ,to test the network :



If the test succeed, click **【Next】** to check the operation of step ⑤

If the test fails, click **【Network】** , the interface is as follows:



(Above is default setting)

④ Please set the IP Address and Gateway to the same network segment with the router, then click **【OK】** ,Or tick the **『DHCP Enable』** to avoid complex settings

(need to open the DHCP function of router) .

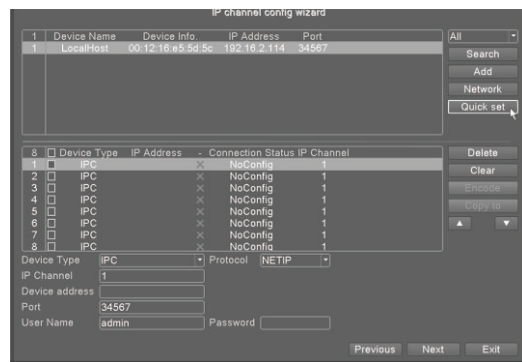
⑤ Click **【Next】** to enter the interface of install mobile app.

(Scan QR code to download mobile APP)

⑥ Click **【Next】** to enter the interface of add devices.

(Click "scan" button on mobile app to add devices)

⑦ Click **【Next】** to enter the interface of IP channel config wizard, click **【Quick set】** , then waiting to add camera.



⑧ After added successful, click **【Next】** to complete the operations.

6 Record Setting

Recorder can identify the picture channel and start record automatically.

If you want to do special settings for the video, you can refer to the following steps:

Right click **【Main menu】** > **【Record】** > **【Record Conf.】** , interface shows as below:



【Channel】 :Video setting for different channels, **【All】** means all channels.

【Length】 : Set the length of each video file and default is 60 minutes.

【Period】 :Support for time slot video, only in the set time can start the video.

【Video type】 : Set the video type and it's convenient to search the video when you playback the video.

7 Video Playback

Right click **【Main menu】** > **【Record】** > **【Playback】** , interface show as below:



1.Playback control

2.Video type

3.Progress bar time

4.Choose playback channel

5.View video by calendar time

6.View video by file

8 Internet Access



IE access:

(Set the device IP and PC IP on the same internet segment.) Input the IP of device (such as 192.168.1.9) in the IE browser address bar, click **【download plug-in】** , and follow the prompts to complete the download and install the plug-in.

Input user name and password in the login interface after installation, and you can view and manage the device.



PC: VMS video management system

Access method:Login baike.xm030.cn,

【Download Center】 > **【Software】** > **【PC Client】** > **【VMS】**

Finish the install according to the system software tips and add the devices to view and manage.



Cloud platform:

Login cloud service website: enter into www.xmeye.net. Click **【new users guide】** to complete the registration and landing cloud service account, you can add device to achieve remote management and view.



Mobile APP access:

Login Android application market (such as assistant of Baidu, assistant of 360 and so on.) and Apple users landing APP Store. Then search the keywords [XMeye] to complete download and installation. You can add the device after registration and login to achieve remote view and management in the mobile. (Note: Account password should be consistent with the one in the cloud platform.)