

Intelligent High Definition Network Camera



1. Getting to know your “Smarteagle”



- 1:HD camera
- 2:Concealed IR LED
- 3:Light Sensor-control switch of IR LED via ray light
- 4: Mic
- 5:WiFi Concealed Wi-Fi - wider view angle without antenna
- 6:Embedded speaker
- 7:Audio output
- 8:Quick access to Internet with WPS
- 9:Alarm input/output
- 10:5V power supply
- 11:Ethernet port
- 12:TF card slot

- 1.1. Interface Function
- 1) Ethernet port: To enable user first connect device with wireless router or access Internet with wired network cable. The device enable user access web in wired or wireless method.
- 2) Power supply: To connect with power adapter.
- 3) WPS: The current version doesn't support the function.
- 4) Alarm input/output: The version doesn't support the function.
- 5) TF card slot: Maximum support 32G TF card to record picture, video and also support recycling recording.
- 6) ⚠Attention: Please do not plug TF card when the device is on electricity.

2. APP download and connection

2.1. Download APP

Scan the QR code on the package to download the APP

2.2. Quick guide diagram

One PTZ camera maximum supports 4 users simultaneously. It could fail to connect if there is over 4 users. There are two online users when two different mobile phones connect with one camera.



2.3. Add APP “Smarteagle”

Two ways to connect APP “Smarteagle”

1) wired connection

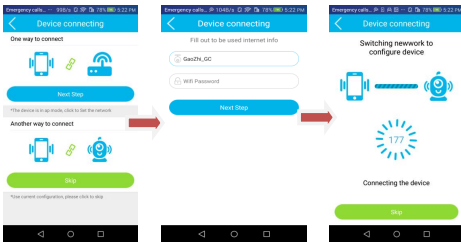


- ①As the picture, connect “Smarteagle”, wait for itself checking(PTZ stop rotating).
- ②Connect “Smarteagle” with routervia Ethernet cable(make sure the router is available), then the Network data light will shine.
- ③Connect User's phone with available WiFi, open “Smarteagle”, add device (see 3.1), enter the user's name and password, then “Smarteagle" online.

2) Wireless connection

- ①Charge “Smarteagle” without Ethernet cable, wait for itself checking.
- ②Connect User's phone with available WiFi, open “Smarteagle”, add device (see 3.1), enter the user's name and password.
- ③Following the three guide picture, deploy WIFI to “Smarteagle”(in Hotspot model).If you choose to skip the deploying process, “Smarteagle” is in Hotspot model automatically.
- ④“Smarteagle”or the “Hotspot Model” online.

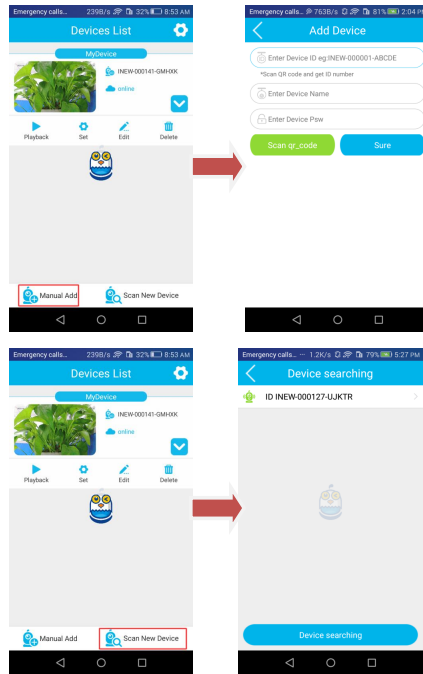
Note: "hotspot model" is that the equipment sent out WiFi hotspots like "IPCAM - INEW - 000000 - ABCDE", After mobile phone connecting with it, the equipment will show online on APP "hotspot model".



### 3. APP function

#### 3.1. Add device

Two ways to add device, manually or LAN scanning



Note: Make sure the device and your phone is under the same LAN before scanning.

5

#### 3.2.Live View

Click the online device in the camera list, enter the live view UI.

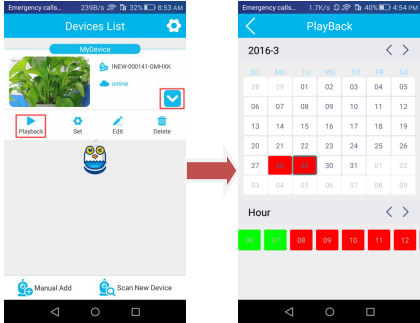


- 1: Exit
- 2: Image setting
- 3:Two way intercom
- 4:Snapshot
- 5:Setting
- 6:Loudspeaker
- 7:Local recording

Note: Local recording is not available when below Android 4.2 version.

#### 3.3. Playback

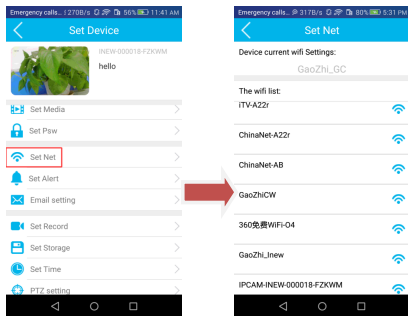
Click playback button,select playback date and time to start playback.Green label for common video, red label for the warning video.



6

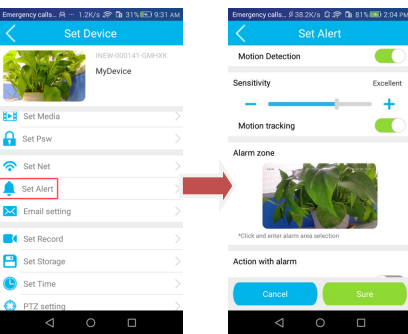
#### 3.4. Internet Setting

To display and change Smarteagle's current WiFi configuration, also display the WiFi Connected to your phone.



#### 3.5. Alarm setting

Setting motion detection, motion tracking, alarm region setting, alarm action , deployment, protecting time.

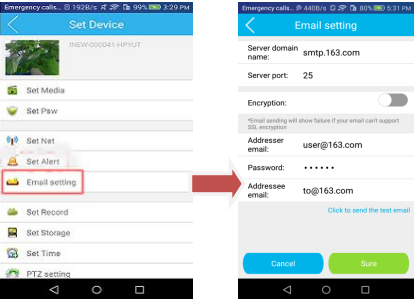


Note: Motion tracking is that the PTZ equipment will follow the moving object when it appears in the surveillance area.

7

#### 3.6.Email setting

When the alarm occurs, the device will send the alarm information to user on time.

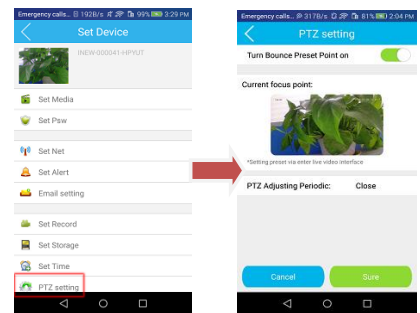


Note:1)The server's domain name is the same as themailbox's domain name, like smtp.163.com.

2) Start SMTPService to set up sender's email address, the password is the independent password when starting the SMTP service.

#### 3.7.PTZ setting

Start"Turn Bounce Preset Point", the PTZ will return to the preset spot periodically. Set the current focus in setting menu of the live interface.



8