

1080P remote wireless hidden camera Operation Manuals

Thank you for purchasing this product, the machine uses a unique ultra-portable design, it can be applied in various fields, it is very convenient, safe and bring a colorful life for you, please set your camera correctly in accordance with the guidelines of the quick steps .

I.APP software download



(IOS/Android)

Method For Android: Scan the QR code . Or search for APP software named “MU Cam” in Google Play, download and install it.

Method For Iphone: Scan the QR code. Or search for APP software named “MU Cam” in App Store, download and install it.

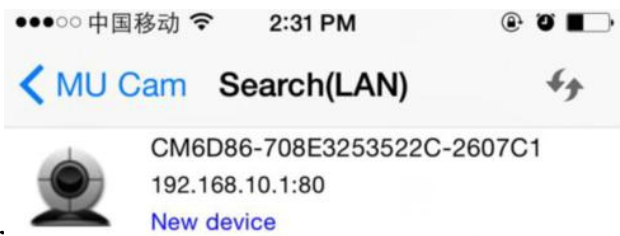
II.The step of AP mode connecting

1.After the red light and blue light are both on and off 15s.When the red light and blue light are both on again,it turns to the statue of blue light on and red light flash,which is Point to Point,AP mode.(If it is not the mode of AP,Please press the reset button till the light is off for about 6s.)

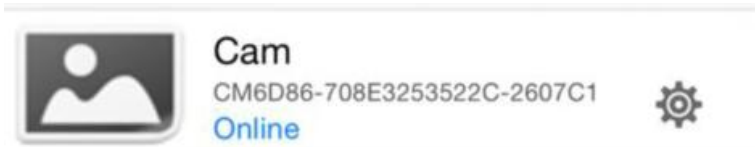
(1) Enter the phone settings where WIFI signal inside, find the signal ID: CM6D86-708E3253522C-2607C1 and connected (This is the machine UID number which is unique to each machine).As the picture showing below:



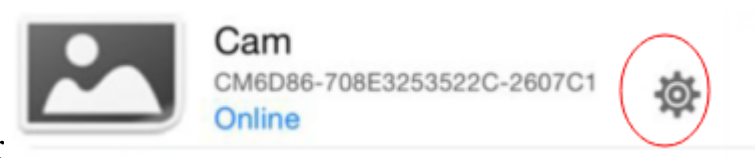
2. Enter the App in Phone, Enter



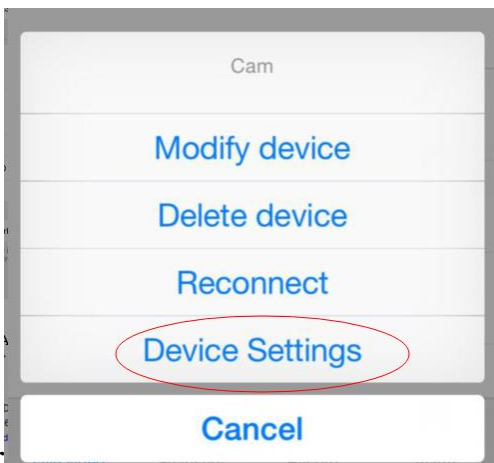
Enter _____ on the right top



Enter



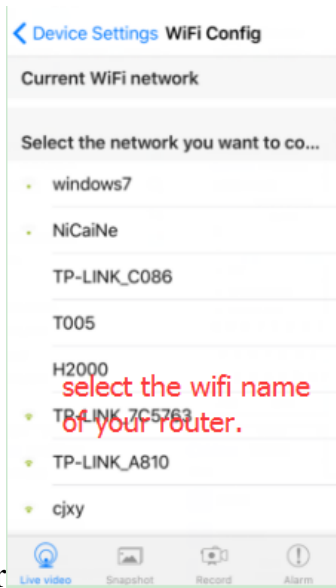
Enter



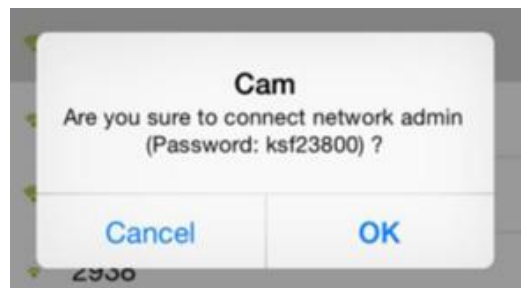
Enter



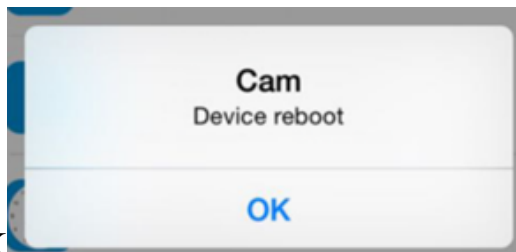
Enter



Enter



Enter(enter the wifi name of your router)
enter the password of the your router,



Enter OK

At this point you can use the phone to watch remote video directly.

III.Quickly configure the camera network

First, prepare a TF card with a card reader attached to the computer, click the right button to build a new file called wifi Notepad document, or copy a disc in



the Notepad document content format:

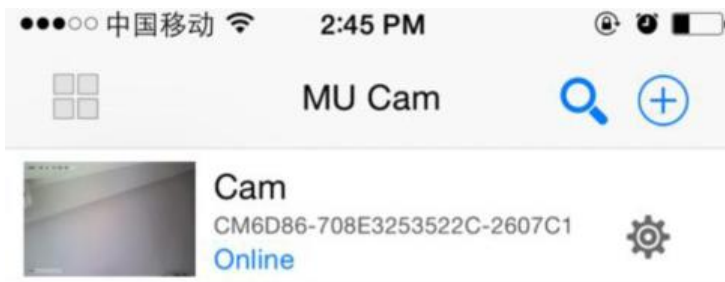
,change MU Cam

into your router signal,12345678 into your router password.

Save and then insert the TF card into the camera, the camera will automatically complete the network, no more action is required. When the red lights of the camera are on, it represents that the camera has been networking. When the red lights of the camera are on, it represents the camera has been networking. Enter



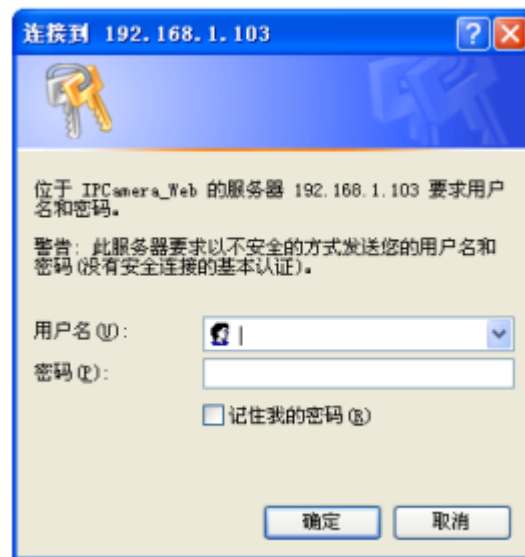
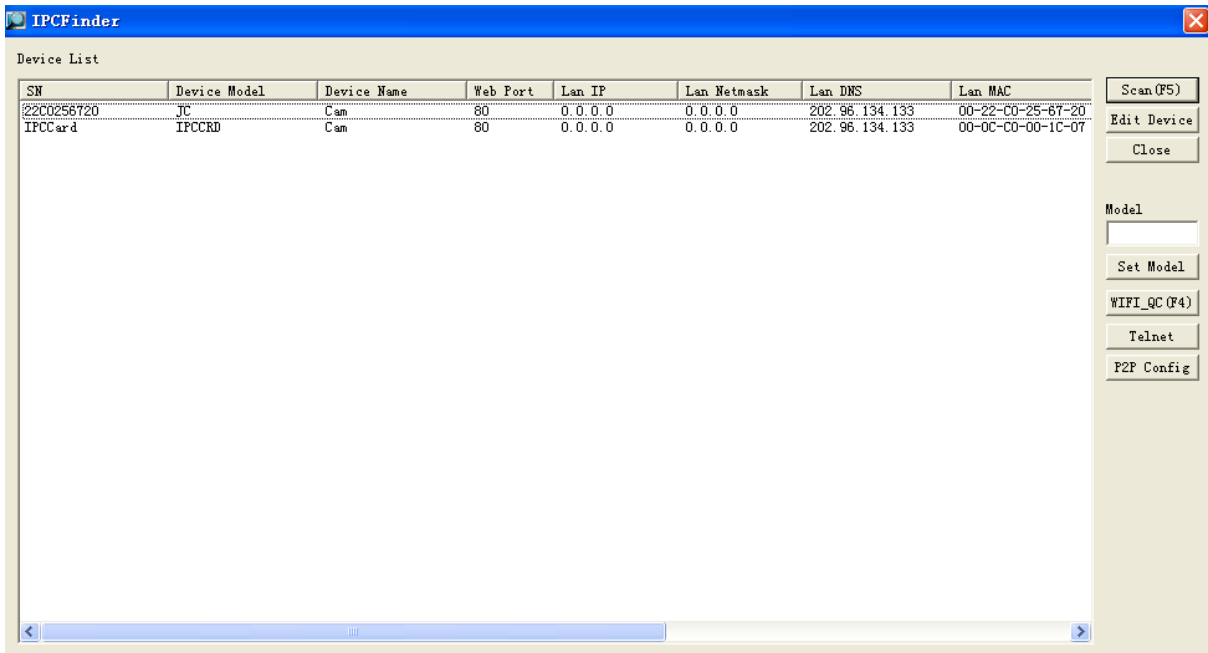
Enter  on the top right.



VI. LAN view the picture on the page


Entering by double clicking  IPCFinder_V1.7.exe
IPCFinder MFC Ap... in the disk, It will automatically find the camera which has already been connected to the Internet .

Like the picture as below:



Enter by double clicking, you will see

Enter your account name: conform yes so as to the mode of LAN view the picture on the page

Initial use must first download a plug (Click  播放插件, 点击下载 for downloading and install it) and Language choosing.

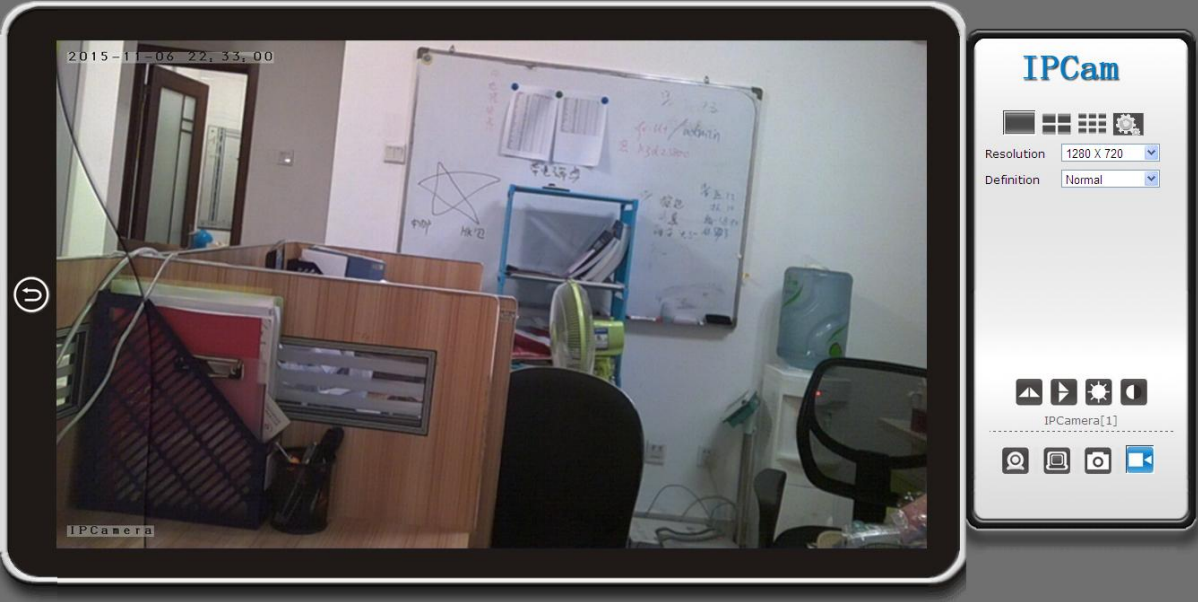
欢迎使用网络摄像机

-  浏览器插件
推荐使用浏览器插件，支持视音频实时播放，兼容Windows平台常见浏览器
-  iPhone/iPod touch以及iPad专用
-  手机浏览器(如Android等)
适用于支持Javascript的手机浏览器。
-  IE 播放插件，点击下载
- 选择语言:

Enter



浏览器插件
推荐使用浏览器插件，支持视音频实时播放，兼容Windows平台常见浏览器

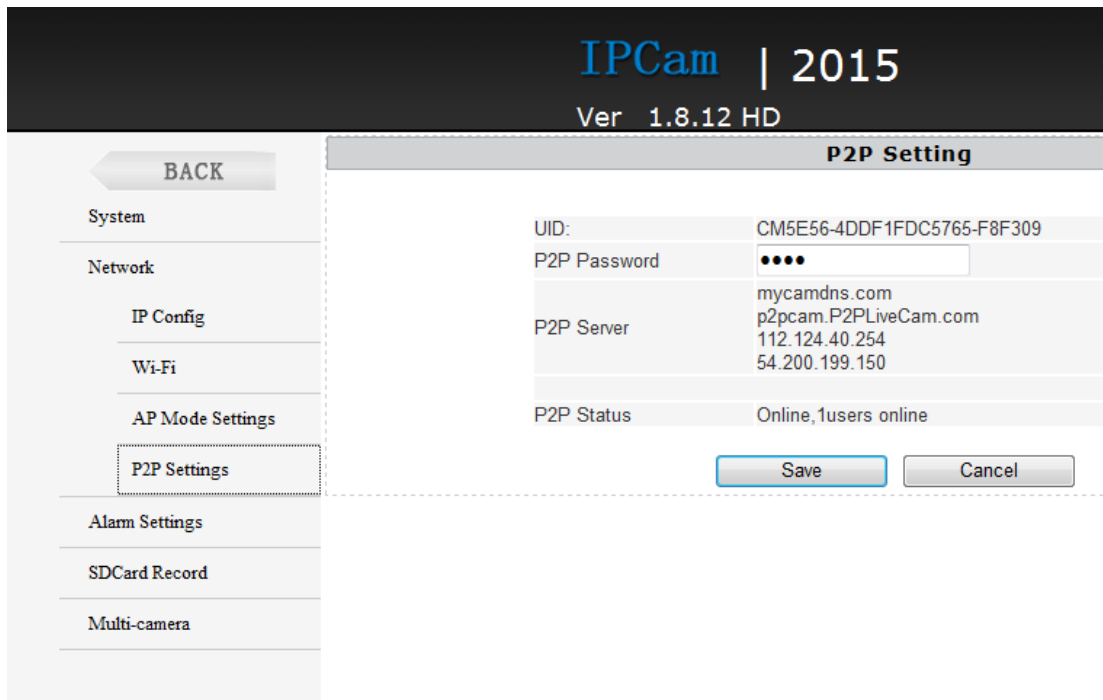


The screenshot displays the IPCam web interface. On the left, a large video window shows a live feed of an office interior with a whiteboard and a desk. The video has a timestamp '2015-11-06 22:33:00' in the top left and 'IPCamera' in the bottom left. On the right, a control panel titled 'IPCam' features a grid of camera views, resolution and definition dropdown menus (set to '1280 X 720' and 'Normal'), and a set of navigation icons (up, down, left, right, refresh, stop) labeled 'IPCamera[1]'. Below these are icons for zoom, pan, and other camera functions.

Enter

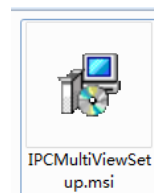


for configuration.



Here the P2P configuration can check Device UID and Password(Default 88888), and change the camera password.

V. Computer client access settings



1. Install the CD-ROM in the client tools to the computer side.

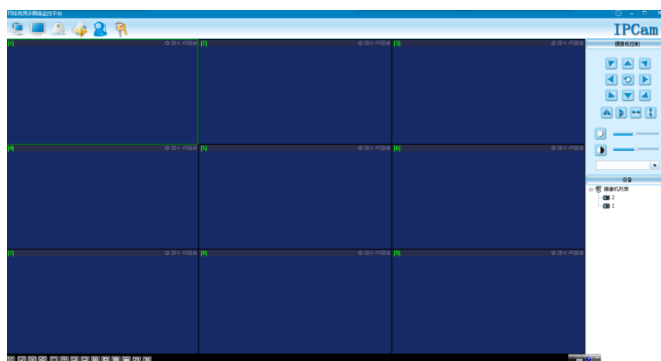
2. Click on the successful installation will appear as shown in Figure Desktop



login box appears. (See below)



3. Enter the user name (admin) ,Click login (Note: The original user name is admin without a password).





Enter



Enter



enter on the top right.

Note:

The device name :easy to remember just write what you want.

Paste on P2P UID

Password had not been changed, then that is 8888, if you have modified, please fill in the newest.

Special note:

1. If the camera is not connected to the router, please reset, configuring it after connecting to the hotspot of the device.
2. If the camera does not read the memory card, please format The Back End of LAN or advanced settings in mobile phone before use.
3. Shutdown Reset: Please re-operation off and reset when you see the red light.