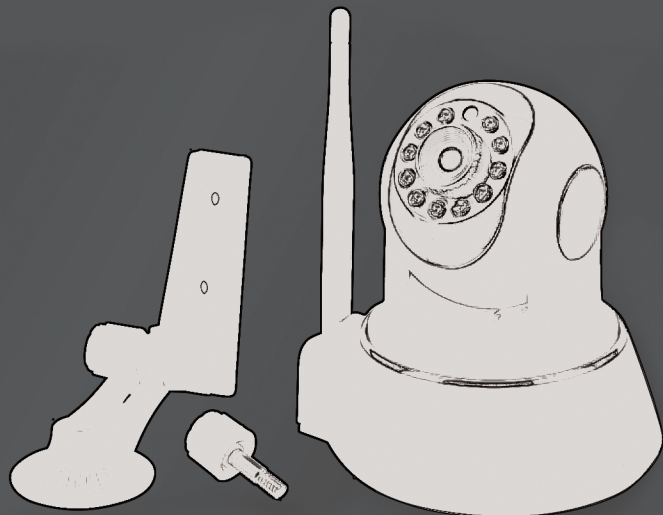


# IP Security Camera Instruction Manual



For correct usage, read these instructions carefully and keep in a safe place for future reference

## IP Security Camera

### INTRODUCTION

#### Congratulations

You have made an excellent choice with the purchase of this quality wifi IP camera.

By doing so you now have the assurance and peace of mind which comes from purchasing a product that has been manufactured to the highest standards, performance and safety.

We want you to be completely satisfied with your purchase so this Oral Care product is backed by our full 12 month guarantee and an outstanding after sales service.

We hope you enjoy using your purchase for many years to come.

### GENERAL INFORMATION AND SAFETY WARNINGS

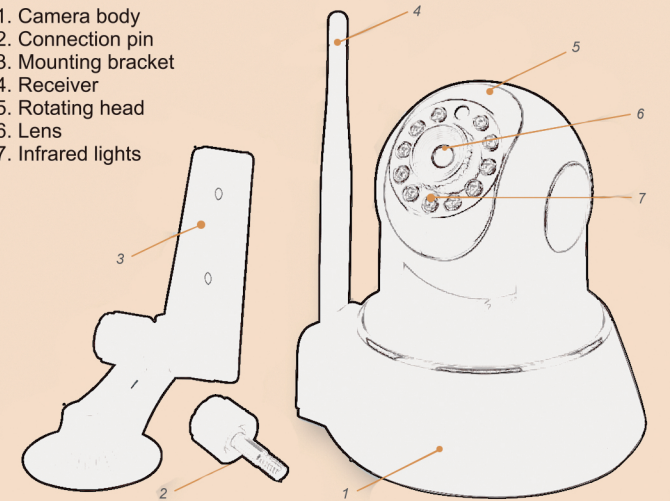
- Security cameras should be positioned out of reach of children and pets.
- The camera is designed for indoor use and should not be used outdoors.
- Locate your camera away from ovens and stoves and electrical equipment.
- Seek assistance from an expert to position the camera if it requires working at height on stair cases or walls.
- Make sure the camera is securely fixed and cannot fall.
- When you set your camera up on your internal system ensure that you have secured your identity using a strong password registered for firmware and check that is updated regularly. Doing this will ensure hackers cannot access your cameras recordings.
- To protect your privacy, do not allow children even those of teenage age to access the camera.
- Children shall not play with the camera.
- Children should be supervised to ensure that they do not play with the camera.
- Keep the camera free from dirt and debris by cleaning regularly. Never use abrasive or harsh chemicals.
- Never immerse the camera in water, only use a soft damp cloth for cleaning.
- Keep the power cable clear of doors and window openings.
- Only use the plug and adaptor supplied with the camera.
- When using electrical products, basic safety precautions should always be followed.
- Check that the voltage indicated on the data plate corresponds with that of the local network before connecting to the mains supply.
- The camera is not intended to be operated by means of an external timer or separate remote control system.
- To reduce the risk of electric shock, do not use outdoors or on wet surfaces.
- Unplug the camera from mains outlet when not in use and before servicing.
- Do not unplug by pulling the cord. To unplug, grasp the plug, not the cord.
- Do not use the camera with a damaged mains cord or plug.
- Do not use the camera if it has been dropped or damaged in any way.
- Repairs to electrical equipment should only be performed by a qualified electrician. Improper repairs may place user at serious risk.
- Do not handle with wet hands.
- Never place the camera on top of or near loudspeakers as acoustic feedback will occur.

#### WARNING:

The camera should not be exposed to fluids and no objects filled with liquids, such as vases should not be placed near the product.

### DESCRIPTION OF PARTS

1. Camera body
2. Connection pin
3. Mounting bracket
4. Receiver
5. Rotating head
6. Lens
7. Infrared lights



### TECHNICAL SPECIFICATION

- 100-240V Adaptor input DC5V/2A camera input
- 720P/960P Megapixel image effect
- Supports: Mobile monitoring - iPhone, Android, Windows, Blackberry
- Supports: Internet Explorer (IE), Chrome, Firefox, Safari browsers
- 2 Way audio
- Motion detection
- Intelligent alerts

### SET UP

**Step 1.**  
Download and install the APP "XMeye" from the APP store or Google Play to your phone /tablet.



**Step 2.**  
Connect the device using the power lead supplied. The camera will turn on and an audible sound will be emitted.

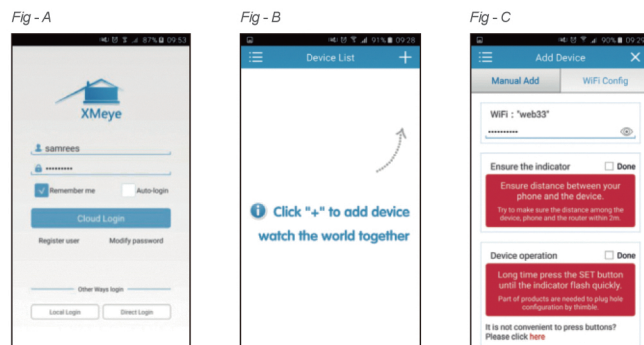
### SET UP

#### STEP 3

Open the XMeye APP on your phone/tablet. Follow instructions click **Register** to register new user. Create user name and password press **Cloud Login**. (Fig - A)

From this point you will find **Device List** (Fig - B). Make a note of your user name and password.

Once done go to **Device List** and click on + to add device where you will have a choice of **Manual Add** or **WIFI configure** (Fig - C).



#### CHOOSING WIFI (if there is only one camera to add)

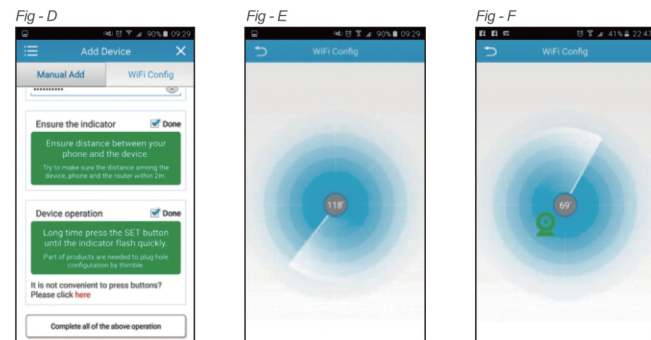
Click on **WIFI configure** (Fig - C) and choose an available WIFI and input your password.

**NOTE: before doing anything further using the P.I.N provided turn the device upside down and press the re-set (RESET) button located in an elongated slot. The camera will say "Waiting to be configured".**

Then click **Done** in both confirm boxes ensure your device, phone and router are within 2 metres. Then click '**Complete all of the above operation**' (Fig - D). The camera searching begins, you will hear a voice "Connecting, please wait" (Fig - E). Once connected a Green Robot Image will be shown and you will hear "Connect router successfully" (Fig - F). Click the robot, name the camera e.g. Living Room, Lounge, Kitchen and click **Add**.

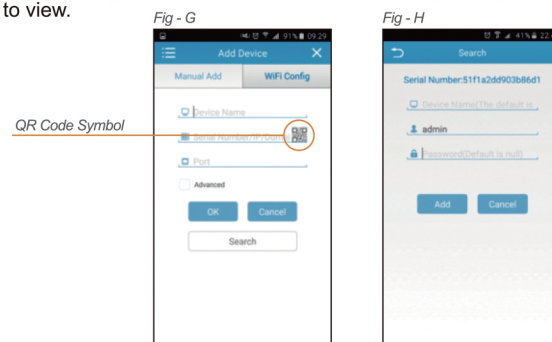


### SET UP



#### CHOOSING MANUAL (only required when there is more than one camera)

Click the QR code symbol on the APP (Fig - G) to scan the QR Code on the camera body. Name the camera and click **Add** (Fig - H). Then click the icon to view.

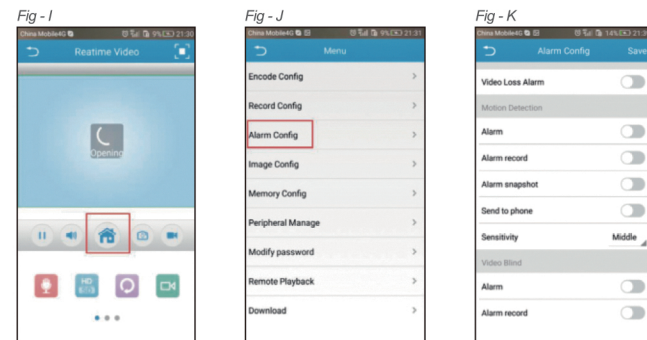


Once you have completed the above steps you can search for the device by clicking on the device name, your phone will connect to the device and you can view live images, make videos, record sound and communicate with people in proximity to the camera.

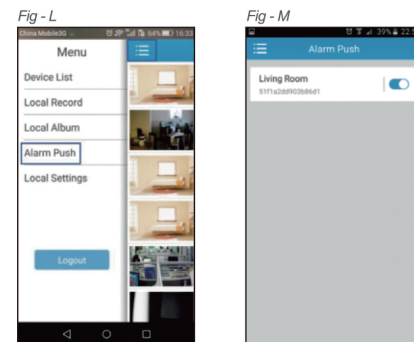
**There are many functions and options available** - Browse and set them to your personal preference. Included is a Motion Detection and Alarm function.

(Figs - I, J and K) Firstly enable this function of the camera: from the Home page, choose Real Time, Menu, Alarm Config and set in which cases to receive the Alarm Push then click Save.

### SET UP



You also need to enable your mobile to receive the alarm push (Fig - L and Fig - M). When this is done, you will receive alerts via your mobile if motion is detected by the camera.



**FIXING TO WALL OR CEILING:** Using 2 plugs and screws provided fix the device securely to a solid foundation using the mounting bracket. Then connect the bracket to the device using the connecting pin. Tighten fully and adjust the angle and position using the elbow on the connection bracket and rotating the head.

**CARE AND MAINTENANCE:** Periodically wipe the surface of the infrared lights and lens using a good quality glass cloth available at all good opticians. Wipe the body of the device with a damp cloth and dry thoroughly.

### GUARANTEE

#### IMPORTANT

Thank you for purchasing this product, which has been made to demanding high quality standards and is guaranteed for normal use against manufacturing faults for a period of 12 months from the date of purchase. This guarantee does not affect your statutory rights. If your product fails due to a defect in material or workmanship during this period, please return it to the place of purchase. Normal wear and tear is not covered under the guarantee. Any guarantee is invalid if the product has been misused or subject to neglect or an attempted repair other than by our own service centre. Due to continuous product improvement, we reserve the right to change the product specification without prior notice.

Please retain for future reference.  
Colours and contents may vary.

Waste electrical products should not be disposed of with household waste. Please recycle where facilities exist. Check with your Local Authority or retailer for recycling advice.



**Please note that all products with the symbol below must be recycled.**