

Switch 868

Wireless Electronic Light Switch User Manual

1. Introduction

The series of wireless electronic light switch adopts wireless radio frequency control mode. remote non-directional, without space constraints. It can be wall and compartment remote control. Hundreds of millions of address codes never repeated. Similar products never string code. It has been widely used in many environments. Such as home, factory, warehouse, office room, store and so on.

2. Specification

Input voltage: 90~240V AC 50/60HZ Standby Power: <1W

Maximum Load Power (1CH): Resistance < 600W Induction or Capability <200W
(Applicable load: incandescent, energy saving lamps, fluorescent lamps, LED lights, etc.)

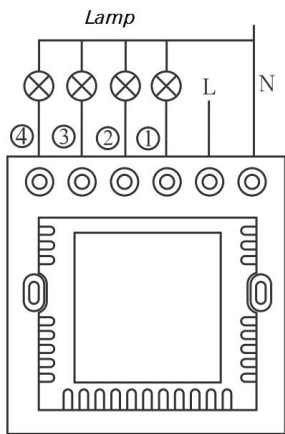
Control mode: Automatic and Manual control mode.

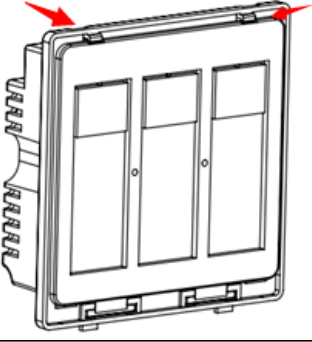
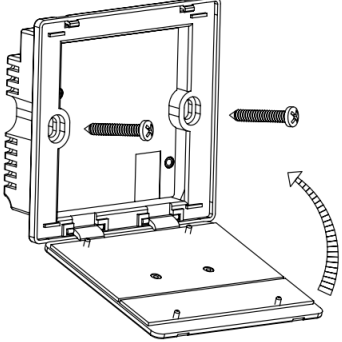
Remote Distance: 80M (in the open air)

With Self-recovery over current protection

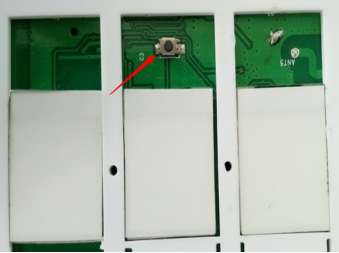

Mounted with 86 type bottom box (not included)



3. Installation And Wiring Diagram



	
<p>Continue to open the top of two snap joint</p>	<p>Take 2 screws to fix to the 86 type bottom box(not included)</p>

4. Learning Code

	<p>Code Button</p>
<p>Alarm Control Panel Learning Code (Support 8CH)</p> 	<p>Enter into the light switch enrolling status from the panel system, first touch the code button, Lamp Button flashes red and blue color at one time, press CH01 again within 2 seconds(If no operations within 2 seconds, lamp button flashes red and blue color again and exit to the enrolling mode) , the panel will give a voice indication enroll successfully, continue to set CH02 and CH03 by the same way or press panel's back button to exit.</p>

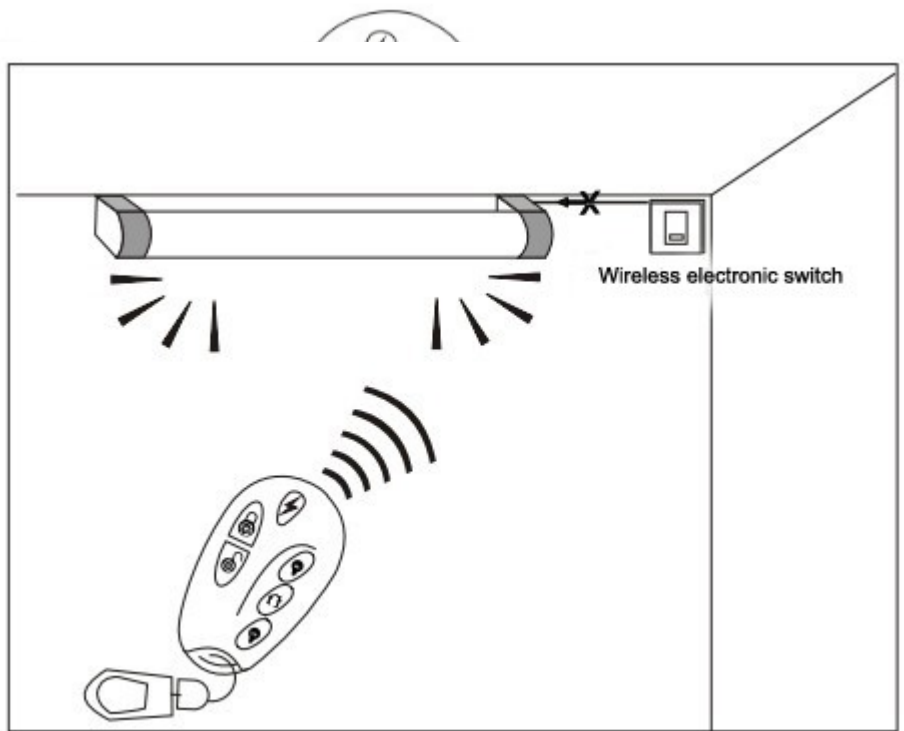
<p>EAVS NVR Learning Code (Support 255CH)</p> 	<p>First enter into the menu of enrolling the switch, first touch the code button, Lamp Button flashes red and blue color at one time, press CH01 again within 2 seconds(If no operations within 2 seconds, lamp button flashes red and blue color again and exit to the enrolling mode).Once there is address code of the switch pop up, save and you can continue to enroll extra two channels by the same way or exit.</p>
<p>Wireless Remote Controller</p> 	<p>Press the code button for 2s, it flashes red and blue color for three times, within 10s, press any lamp button in the remote controller.</p> <p>After 10s, the switch will exit to enroll, or after the switch enroll into the remote control, press the code button for once, when existing, the blue and red light will flash once.</p> <p>Same switch can be enrolled into 10 remote controllers at most.</p>
<p>Delete Code</p>	<p>Long press the black button for 8s, the red and blue led light will flash 6 times respectively, then the code of remote is deleted from the switch.</p>

5.Operation For Remote Controller.

CH01: press lamp 1

CH02: press lamp 2

CH03: press lamp 1 and lamp 2 at the same time.



Note:

1. Please do not install when electrical power is on.

2. Please do not install in high humid environment.

3. Please do not use it beyond the loading