

Setting RTSP

INSTRUCTIONS for setting RTSP

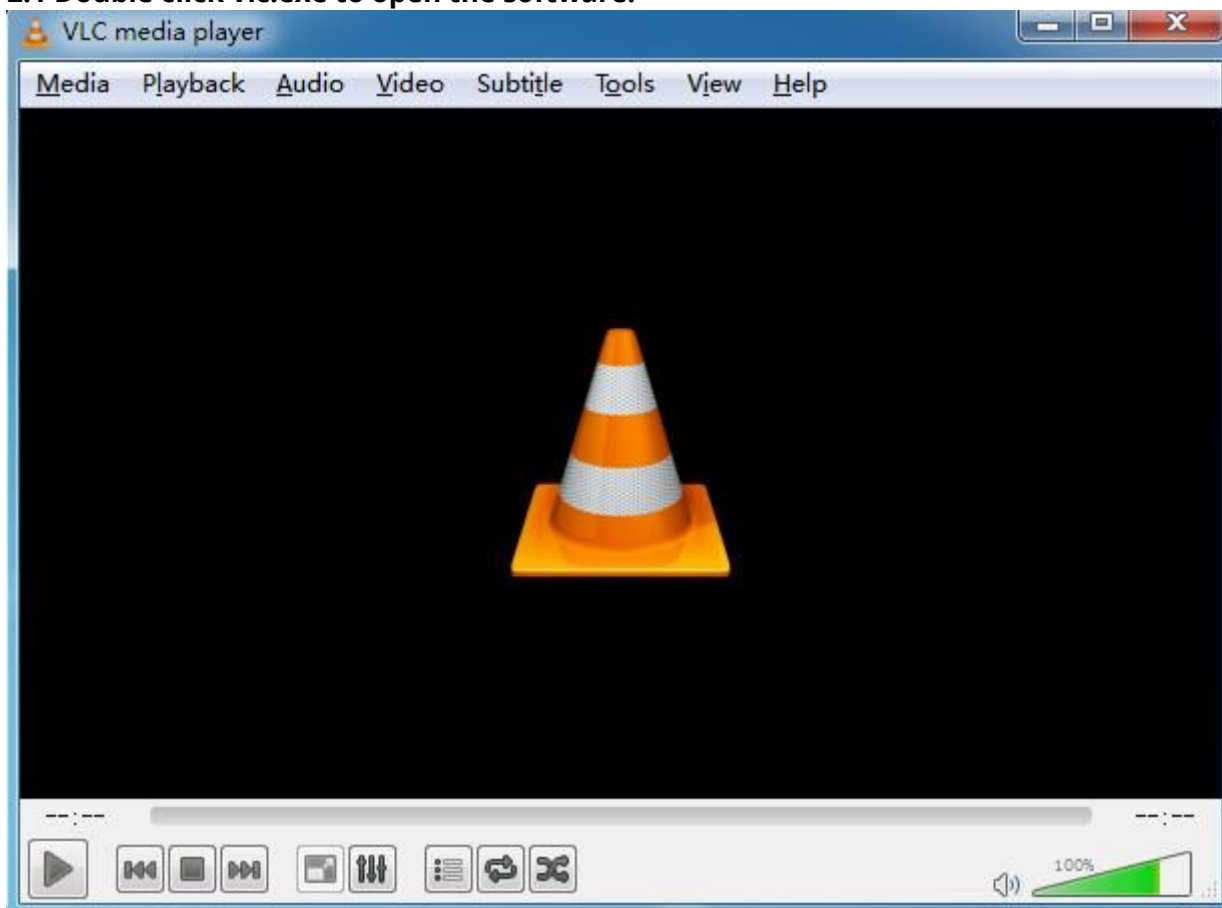
1) Install VLC software.

Downloading VLC player and install it in PC. Official download address:
<http://www.videolan.org/>



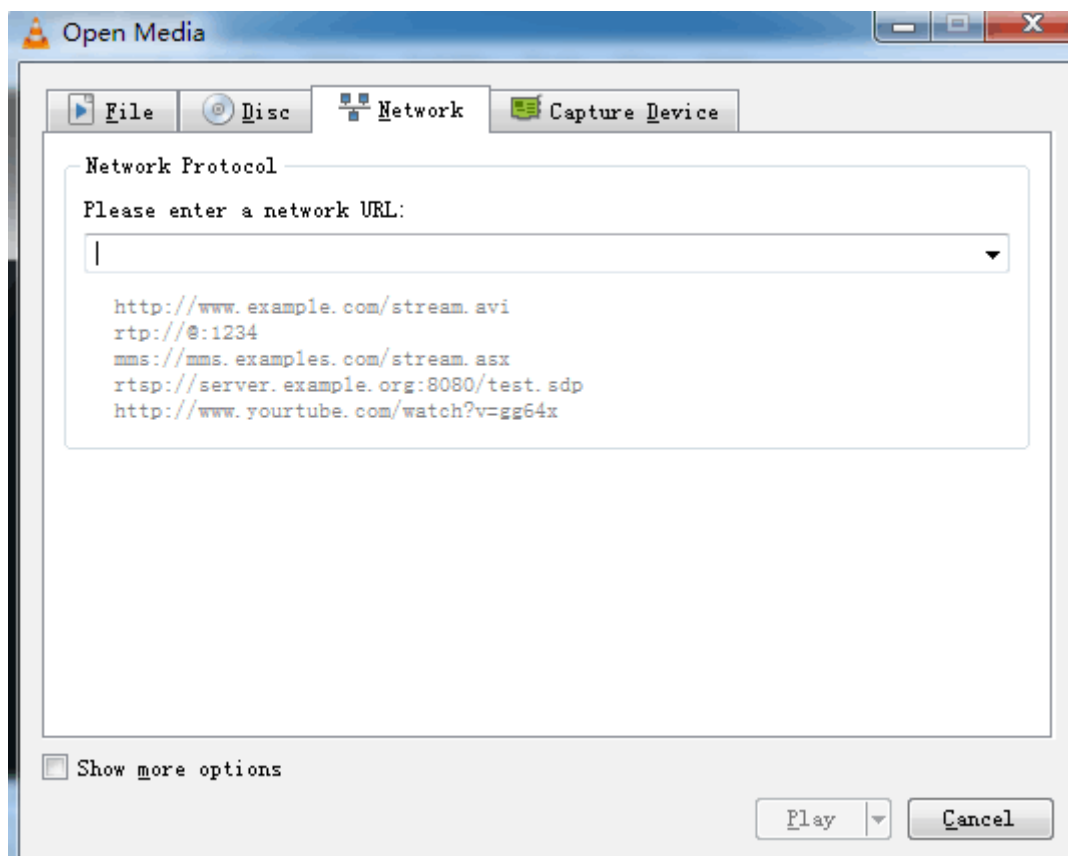
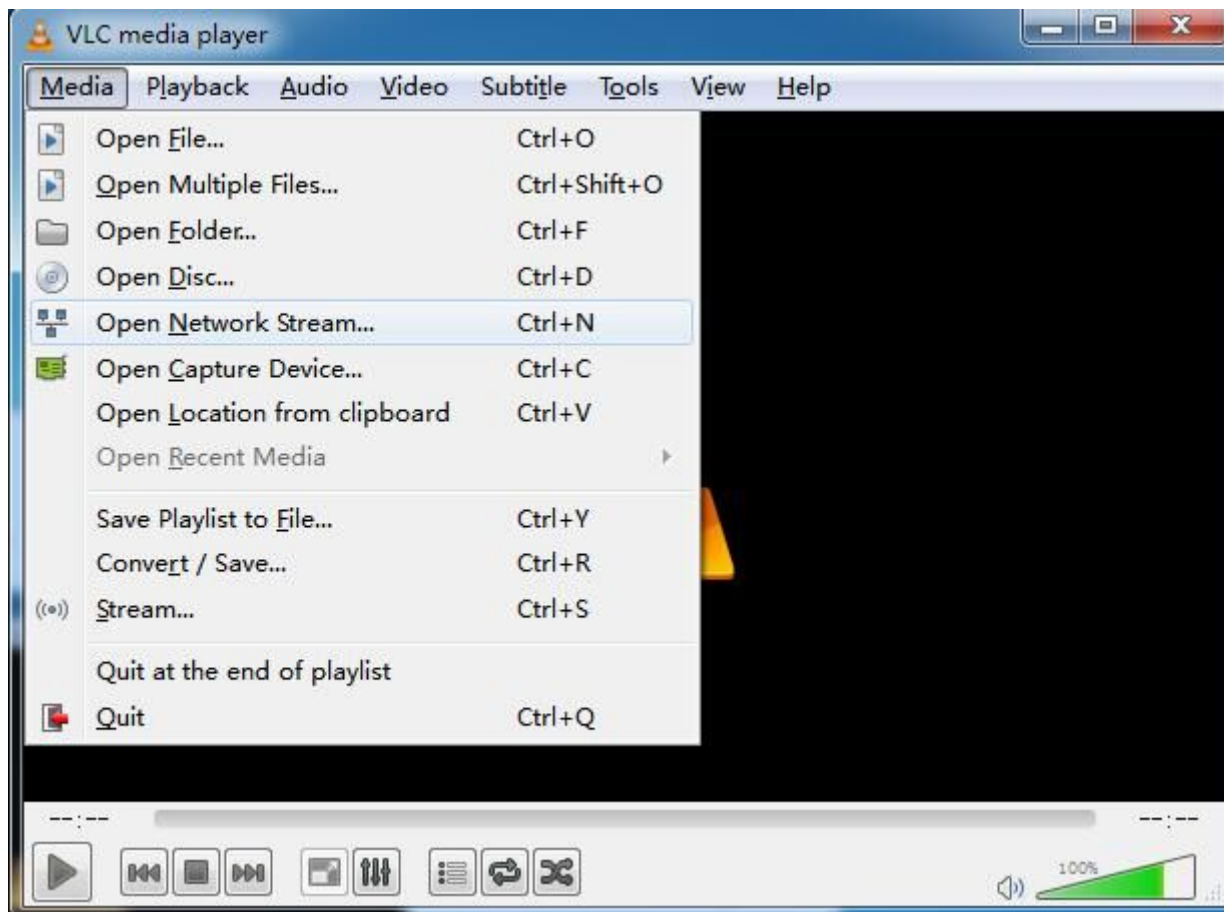
2) Setting Connect Configuration on VLC.

2.1 Double click vlc.exe to open the software:



2.2 Open Network Stream:

“Media”-----“Open Network Stream”



2.3 Input Network URL:

Please fill in the entire network URL of RTSP, like this:

rtsp://mydvr.net:554/user=admin&password=&channel=1&stream=0.sdp?

rtsp://192.168.1.10:554/user=admin&password=&channel=1&stream=0.sdp?

In this URL:

mydvr.net, This is the device domain name address which is connected.

Or 192.168.1.10 This is the device IP address which is connected.

:554 This is the RTSP port, it can be changed in NetService of the device.(see below picture)

user=admin This is the device login name.(factory default is admin)

password= This is the device password.(factory default no password)

channel=1 This is the channel No. (1 stands for first channel.)

stream=0.sdp? This stands for Main Stream.

